

CHAMBERLINES

Anson County's New Emergency Center Opens!

One year and one day from the time ground was broken, Anson County's new Emergency Services Center opened with a brief dedication ceremony and open house on Sunday afternoon.

"What you see here today is the culmination of almost three years of work by our county employees," Sheriff Tommy Allen said.

The new 24,000-square-foot facility houses EMS, emergency management, fire marshal, systems and IT support services, road naming and an emergency operations center. The 911 Center is scheduled to open in April. Sheriff Allen said that more than 60 full-time and part-time employees will be working in the building.

"EMS has been operating out of a converted office building," he said, adding that vehicles that are worth hundreds of thousands of dollars have been left outside with no protection from the extreme cold or extreme heat.

The new facility has been constructed under FEMA standards, meaning it is built to withstand hurricane-force winds.

Anson County Commission Chair Anna Baucom said, "You cannot imagine how proud we are. What a wonderful time for our community. This building was built for the people of Anson County, and Anson County people deserve the best."

Wadesboro Mayor Pro Tem James David Lee appeared on behalf of Mayor Bill Thacker, and congratulated everyone involved on "a beautiful facility."

Chris Malinowski of Messer Construction thanked the county for being great to work with, and pointed out that even though it rained for 140 straight days once the project got started, it was finished on time and on budget.

County Manager Lawrence Gatewood shared a story from his childhood in

which he discovered what "vision" meant. He quoted the passage, "Where there is no vision, the people perish."

"Today, we celebrate the reality of our vision," he said. Gatewood added that the new facility is large enough to accommodate the county's needs for the next 50 years. "More importantly, this building is affordable for Anson County," he said.

In addition to serving Anson County's needs for many years to come, the new Emergency Services Center also has the ability to serve as a back-up facility for other counties.

The center is located at 2230 Country Club Road in Wadesboro.

Article Courtesy of The Anson Record



CY 2014 Renewals Thank You!

Anson County Domestic Violence
Anson Real Estate
Anna Baucom
Branch Banking & Trust
CMC-Union
Crider & Crider Properties
Events Catering, LLC
First Bank

McGuirt Advertising
Mike Goodwin Logging
Hospice of Anson County
La Fogata Restaurant
Lacy's
Lady Bug Family Restaurant
Steve Leary
The Old Store

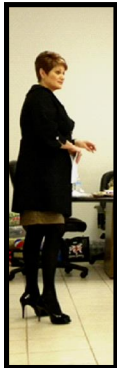
Southern Medley Wine Cellar
State Employees Credit Union
Tebo Stephens
Wal-Mart
Gene Ward
John Witherspoon



SPCC's Small Business Center hosted a Lunch & Learn with Rose Plesz on "Who Are You and What Does It Say About Your Business"



On February 18 the Anson County Chamber of Commerce held a Lunch & Learn sponsored by South Piedmont Community College's Small Business Center with Director Lisa Rolan. The presentation was given by Rose Plesz, Independent Senior Sales Director for Mary Kay on "Who Are You and What Does It Say About Your Business."



Rose Plesz

The attendees learned about different generations and personalities in the workplace. The four generations discussed were the Traditionalists who have loyalty and faith in a company and make up five percent of today's workforce; the Babyboomers who love being their own boss and become entrepreneurs and make up forty-three percent of today's workforce; Generation X who are resourceful and are forty-two percent of the workforce; and the Millennials who love change and see every day as a new day with possibilities, and they make up ten percent of the workforce today. Attendees were given a handout on different personalities in the workplace. The handout was on taking a "DISC" Test to determine your personality. Plesz stated that if you are the "D" personality then you are a dominant person, "I" are Influential, "S" are Security Focused, and the "C" are very Calculating. Plesz commented that your goal should be to have some of all the personalities.



Attendees of the Lunch & Learn

The lunch for this event was provided by Subway. Door prizes were given out and all enjoyed networking and sharing information with each other after the event.



SAVE THE DATES

Exciting Upcoming Events at the L.L. Polk Campus

Family Movie Night
Friday, April 4
7:30 pm
Movie Feature: Frozen (Disney)

Free College Day
Saturday, April 5
9 a.m. - Noon

REFRESHMENT SERVICES, Inc.
Vending, Coffee & Water

1209-A Technology Dr.
Indian Trail, N.C. 28079

Phone: 704-821-5464 VM ex. 23
Fax: 704-821-0160

www.rsi4u.com

Anson's Community Real Estate Company

Plank Road Realty
'Your Hometown Realtors'
704-694-9570
Toll-Free: (800) 694-9755

E-Mail: homes@plankroadrealty.com ■ Website: www.plankroadrealty.com

209 East Wade Street, Wadesboro, N.C., 28170

Residential • Commercial • Land • Rentals

Chamber's Annual "Captain's Choice" Golf Tournament!

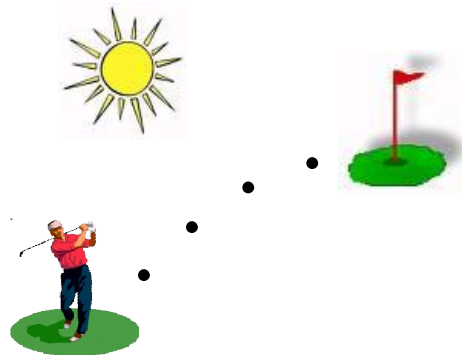
Friday, April 11th, at Twin Valley Country Club in Wadesboro, the Chamber of Commerce will be hosting their Fourteenth Annual "Captain's Choice" Golf Tournament. The presenting sponsor for 2014 will be Carolinas HealthCare System.

Registration forms will be mailed out soon and will also be available at the Chamber office. There will be 40 teams, with 20 teams in the a.m. and 20 teams in the p.m. Afternoon golfers eat at 11:30 a.m. and morning golfers eat at 1:00 p.m. Register early to confirm your tee time. Sponsorship levels are Corporate-\$1000, Platinum-\$500, Gold-\$320, Silver-\$150. For detailed information please call 704-694-4181.

Prizes will be awarded for both morning and afternoon golfers. Split the pot tickets will also be available again

this year along with hole-in-one and the ball drop.

Goody bags will be given out to each player. If you are looking to have a great day golfing, chances to win some prizes and enjoy a great lunch, this is the "Premier Golf" event for you. See you there!



4th Annual Shoot Out

The Wadesboro Rotary Club will hold their 4th Annual Sporting Clays Competition on Saturday, March 29 at Buchanan Shoals in southeastern Anson County.

All teams must pre-register by Friday, March 14. Event schedule is: registration sign-in at 10:00 am, warm-up from 10:00 am to 12:00 pm, lunch at 12:00 pm and competition from 1:00 pm to 5:00 pm.

All proceeds from this fundraiser will go directly to the Wadesboro Rotary Club Youth Shooting Team, scholarships and other community projects.

The competition will consist of shooting a 5-Stand, Flurry, Double Trouble and Point Break. The combined score of all 4 team members will determine the winner of this event.

For more information contact Jason Kiker at 704-695-2810 or Kevin Thomas at 704-694-8883.



Ambassador Health & Rehab of Wadesboro

FEATURING:

- Specialized Short-Term Rehab
- Outpatient Rehab Services
- IV Therapy and Wound Care
- Orthopedic & Post Operative Care

Admissions: (704) 465-5713

2051 Country Club Road
Wadesboro, NC 28170 • (704) 694-4106

Realtor Janet Cox

Associate Broker, ABR, CRS, GRI

209 East Wade Street
Wadesboro, NC 28170
janet@plankroadrealty.com

Cell: 704-694-8010 Home: 704-694-6796

Beach Property: If you or anyone you know are looking for a residential home, condo or townhome in the North Myrtle Beach area give me a call! Summer is around the corner! Landmark Resort Condo available!

PLANKROADREALTY
www.plankroadrealty.com

Find me on Facebook: Janet Harrington Cox (realtor)

Branch Banking & Trust

P.O. Box 111 | 111 E. Caswell St.
Wadesboro, N.C., 28170

Phone: 704-694-6521 | Fax: 704-694-4817
www.bbt.com

Phyllis Dawkins Brian Baucom
Financial Center Leader Certified Market President

The Best Bank in Town Since 1872

PLACE YOUR AD HERE!

FOR MORE DETAILS
CALL:
704.694.4181

CALENDAR

■ The Chamber of Commerce Marketing Committee will meet at 8:00 a.m. on Thursday, March 6.

■ The Chamber of Commerce Board of Directors will meet at 7:30 a.m. on Tuesday, March 18.

■ The AEDC will meet at 7:30 a.m. on Thursday, March 20.

■ Uptown Wadesboro Inc. will meet at 12:00 p.m. on Tuesday, March 11.

All of the above meetings will be held at the Chamber of Commerce.

Upcoming Calendar Events

March 9 — Daylight Savings.

March 15 — 4th Annual Catfish Stew Cookoff and a Stew Of Your Choice Contest will be held at Hatcher Park in Lilesville from 11:00 am to 3:00 pm with judging between 1:00 pm and 2:00 pm. Entry fee is FREE. For more information call 704-848-4711.

March 20 — The Old Store in Lilesville will hold their **Cruise In** starting at 5:00 pm. For more information call 704-848-8385.

March 20 — ACCESS will hold an **ACCESS Information Session** at 1:00 pm at 114 East Wade St., Wadesboro. For more information call 1-866-472-2212.

March 21 — ACCESS will hold a **Business**

Anson County Chamber of Commerce
P.O. Box 305 • 107-A E. Wade St.
Wadesboro, N.C., 28170-0305
Information: 704-694-4181
Website: www.ansoncounty.org
E-mail: ansonchamber@windstream.net



Discover Anson: A Great Place To Call Home

CHAMBERLINES, PAGE 4

March 2014

Plan Writing Workshop from 9:00 am to 4:00 pm at 114 East Wade St., Wadesboro. For more information call 1-866-472-2212.

March 21 — The Ansonia Theatre will have Matt Jernigan, Musical Comedian & Impressionist with show starting at 7:30pm. Reserved seating, tickets are \$15. For more information contact 704-694-4950.

March 28 & 29 — 3rd Annual Anson County Wild Hog Round Up will be held at Partners Feed & Seed at 1953 New Home Church Rd., Peachland. Deadline to register is March 27. For more information call 704-320-5232.

March — Domestic Violence Support

Group meets each Monday from 5:30-7:00 p.m. at the Anson County Domestic Violence Coalition office, Wadesboro.

March — HOLLA! Center in Morven offers tutoring every Monday & Thursday from 3:00 pm till 5:00 pm at the HOLLA! Center in Morven. . For more information contact HOLLA! at 704-851-3144.

March — HOLLA! Reading Room at the HOLLA! Center in Morven is open every Saturday from 9:00 am till Noon for grades K-8th. For more information contact HOLLA! at 704-851-3144.



Termites ■ Fleas ■ Roaches
Moisture Control
Automatic Temp Vents



License # 446 P.W.
Daytime Phone: 704-694-6207
Toll-Free 1-800-955-3047
204 S. Rutherford St., Wadesboro

Uwharrie
BANK

When you do business with Uwharrie Bank, your money provides capital for new businesses, creates jobs and improves the quality of life for families. We want what's best for our communities, friends and neighbors ...

Together, we can Make a Difference.



www.Uwharrie.com

FDIC

SP
SOUTH
PIEDMONT
COMMUNITY COLLEGE

Ready to Work Expo – Anson County

Tuesday, April 1

9 a.m. - Noon

Lockhart-Taylor Center

514 N. Washington St. Wadesboro

Informative Seminars • Connect with Local Employers
Discover Staffing Agencies • Explore SPCC Programs

www.spcc.edu/cce/hrd/readytoworkanson

Anderson
REAL ESTATE



Homes
Commercial
Land
Rentals

704-694-5050

www.AndersonRealEstate.org
carroll@AndersonRealEstate.org
202 E. Morgan St. Wadesboro, N.C.